

Modular Cooking Range Line thermaline 80 - Passthrough Electric Static Oven Base, 1 Side - H=550

ITEM # _____
 MODEL # _____
 NAME # _____
 SIS # _____
 AIA # _____



588248 (MA8BDAHOAO)

Electric static passthrough
 Oven Base, one-side
 operated

Short Form Specification

Item No. _____

Passthrough electric static oven base with 40 mm thick oven door and ribbed enamelled steel base plate. Constructed according to 1.4301 (AISI 304). Oven chamber with 2 levels of runners for 2/1 GN shelves to enable simultaneous and faster cooking. Heavy duty thermostat with temperature range up to 300°C. Two independent heating elements, the upper one can also be used for grilling. Flat surface construction, easily cleanable. Overheat protection switches off the supply in case of overheating. Metal knobs and oven handles ergonomically designed with embedded hygienic silicon "soft" grip enable easier handling and cleaning. IPX5 water resistance certification. Configuration: One-side operated freestanding base

Main Features

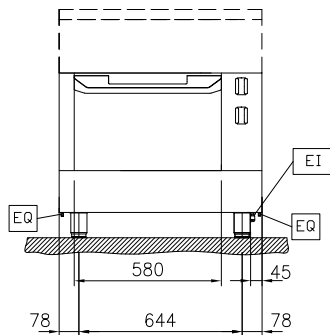
- Overheat protection: a temperature sensor switches off the supply in case of overheating.
- 40 mm thick oven door for heat insulation.
- All major components may be easily accessed from the front.
- Metal knobs with embedded hygienic "soft-touch" grip for easier handling and cleaning. The special design of the controls prevents infiltration of liquids or soil into vital components.
- Oven chamber to have 2 levels of runners to accommodate 2/1 GN trays and ribbed enamelled steel base plate.
- The upper heating element of the oven can also be used for grilling.
- Heavy duty thermostat with temperature range up to 300°C.
- Handles are ergonomically designed with silicon "soft" grip for easy handling and cleaning.
- Unit constructed according to DIN 18860_2 with 70 mm recessed plinth.
- The oven has two independent heaters, controlled by two separate knobs: one for top heat and one for bottom heat.
- Oven temperature up to 300 °C

Construction

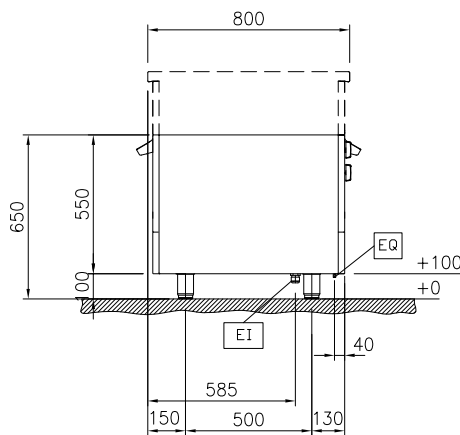
- Flat surface construction with minimal hidden areas to easily clean all surfaces
- IPX5 water resistance certification.

APPROVAL: _____

Front

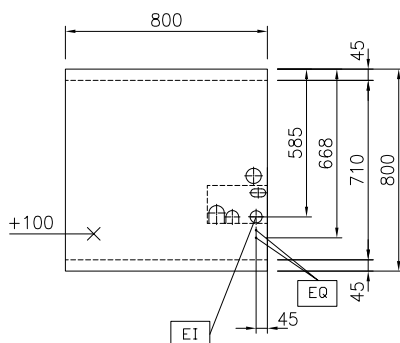


Side



EI = Electrical inlet (power)
EQ = Equipotential screw

Top



Electric

Supply voltage: 400 V/3N ph/50/60 Hz
Total Watts: 5 kW

Key Information:

Oven working Temperature: 60 °C MIN; 300 °C MAX
Oven Cavity Dimensions (width): 575 mm
Oven Cavity Dimensions (height): 300 mm
Oven Cavity Dimensions (depth): 700 mm
External dimensions, Width: 800 mm
External dimensions, Depth: 800 mm
External dimensions, Height: 550 mm
Net weight: 97 kg
Configuration: One-Side Operated
Oven GN: GN 2/1

Sustainability

Current consumption: 10.8 Amps

Included Accessories

- 1 of Grid, chromium plated, for ovens 2/1 GN PNC 910652

Optional Accessories

- Baking sheet 2/1 GN for ovens PNC 910651 ☐
- Bottom steel plate 2/1 GN for fire clay plate 800x900 with baking oven PNC 910655 ☐
- Fire clay plate 2/1 GN for ovens PNC 910656 ☐
- Stainless steel side panel, 800x800mm, freestanding PNC 912508 ☐
- Stainless steel front kicking strip, 800mm width PNC 912598 ☐
- Stainless steel side kicking strips left and right, freestanding, 800mm width PNC 912619 ☐
- Stainless steel side kicking strips left and right, against the wall, 800mm width PNC 912622 ☐
- Stainless steel side kicking strips left and right, back-to-back, 1610mm width PNC 912625 ☐
- Stainless steel plinth, against wall, 800mm width PNC 912806 ☐
- Stainless steel plinth, freestanding, 800mm width PNC 912825 ☐
- Stainless steel panel, 800x800mm, against wall, left side PNC 913094 ☐
- Stainless steel panel, 800x800mm, flush-fitting, against wall, right side PNC 913098 ☐
- Stainless steel side panel, left, h=800 PNC 913216 ☐
- Stainless steel side panel, right, h=800 PNC 913217 ☐
- Energy optimizer kit 14A - factory fitted PNC 913244 ☐
- Side reinforced panel only in combination with side shelf, for freestanding units PNC 913257 ☐
- Side reinforced panel only in combination with side shelf for against the wall installations, left PNC 913264 ☐
- Side reinforced panel only in combination with side shelf, for against the wall installations, right PNC 913266 ☐
- Side reinforced panel only in combination with side shelf, for back-to-back installations, left PNC 913273 ☐
- Side reinforced panel only in combination with side shelf, for back-to-back installation, right PNC 913274 ☐
- Stainless steel dividing panel, 800x800mm, (it should only be used between Electrolux Professional thermaline Modular 80 and thermaline C80) PNC 913669 ☐

- Electric mains switch 25A 4mm² NM for modular H800 electric units (factory fitted) PNC 913676 ☐
- Stainless steel side panel, 800x800mm, flush-fitting (it should only be used against the wall, against a niche and in between Electrolux Professional thermaline and ProThermetic appliances and external appliances - provided that these have at least the same dimensions) PNC 913685 ☐